



International Association of Public Transport
 Union Internationale des Transports Publics
 Internationaler Verband für öffentliches Verkehrswesen
 Unión Internacional de Transporte Público

Public Transport and Sustainable Development

Heather Allen
 Sustainable Development Manager
 UITP - the International Association of Public Transport

Better mobility for people worldwide

UITP The International Association of Public Transport

NETWORK - 2500 members representing all mobility actors

FORUM - Themed events, World Congress

AVOCATE - International advocate for better mobility worldwide

REFERENCE - Centre of Knowledge for the sector



Bus

Ferry

Trolley Bus

Commuter Rail

Tram

Light Rail

Suburban/
 Trains



Transport and the City

Cities need good, efficient transport to be successful, productive, healthy and pleasant to live in.

Citizens need good mobility to lead full and active lives.



Speed

Getting around

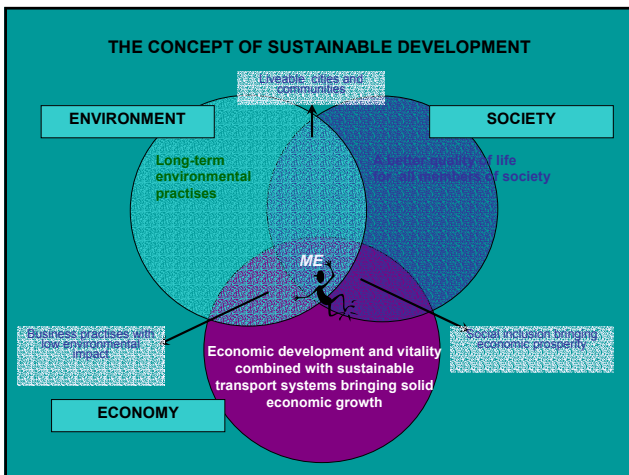
Moving people

Fun

Mobility

What is Sustainable Mobility?

Meeting people's needs for access to markets, employment, education, and giving every citizen the right to access to essential services



What is Sustainable Mobility?

Without making excessive emissions.

Without using excessive energy.

Without using excessive space

WITHOUT DAMAGING THE ENVIRONMENT



Challenges for cities

Threatened quality of life and economic vitality of urban areas.

Excessive, unrestricted car use has a negative effect on our communities.

The key forces are:

- Urban Sprawl
- Increased congestion
- Reduction in productivity of people and the performance of public services
- Rising costs and the transparency of funding.
- Widening the poverty gap

UTP

Modal choice & transport cost

Megatrends

Socioeconomic trends are diminishing the relevance of traditional public transport services. Societies are changing towards:

- Increased individual and less communal living;
- General realignment or even a breaking up of accepted family/group/ or tribal structures;
- More complex work, and leisure patterns;
- A strong media influence and a growing 'enjoy now – pay later' culture.

UTP

Modern consumers are "Hedonistic Idealists"

They live with a paradox:



UVP

INTRODUCING EARTH'S FIRST FULL HYBRID SUV.

Most Escape HybridSM is the first and only gas/electric SUV. The Escape Hybrid combines fueling, getting the most, and more, with the added benefit of a hybrid drive capability. Saving the planet, for driving engine performance that makes it the most fuel-efficient SUV ever¹ (over 33 city mpg). And even more, that makes it the ultimate SUV ever² which means the SUV, by nature, is better and greener than most. New technology means greater safety, more options. It's the right kind for our country. And we're real serious. Read more about the Escape Hybrid and Ford's other environmental initiatives on fordvehicles.com/escapeh.

Escape Hybrid

1. 2004 EPA estimate. 2004. 2. Based on EPA's 2004 SUV and SUV-like vehicle ratings.

Based on EPA's 2004 SUV and SUV-like vehicle ratings and performance on road testing. See [fordvehicles.com/escapeh](http://www.fordvehicles.com/escapeh).

AIM: ZERO EMISSIONS

Hybridness. Efficient. Right around. Ford's hybrid is being designed to drive and drive.

The Toyota Prius features Hybrid Synergy Drive, the combination of electric and gas power means the car uses engine technology to reduce fueling.

TOYOTA

In one short decade, Americans have radically altered the symbols they associate with success and accomplishment...

(Percent Change 1987-1996)



Source: Yankelovich Monitor, 1987-1996

UVP

So what do they do about it?



They don't know what else they can do????



Total External costs of Transport Million €/yr

	Total	%	Car	Bus	MC	Passenger Total
Accidents	156 439	24	114 191	965	21 238	136 394
Noise	45 644	7	192 20	510	1804	21 533
Air Pollution	174 617	27	46 721	8290	433	55 444
Climate Change (High)	195 714	30	64 812	3341	1319	69 472

Source INFRAS Study External Costs of Transport Update October 2004, IWW University of Karlsruhe. Base year 2000 for EU 17.

- Results show that 78% of all external costs come from road transport (passenger and freight)
- Accidents, pollution and congestion costs represent 560 bio II or 1200€ per capita for EU 17.



The Economic Case:

The Cost of Transport to the Community

Density, Modal Choice and Cost of Urban Public Transport

Cities	Density (inhab/ha)	Modal split (walking + cycling + PT)	Cost of Urban Transport (% GDP)
Houston	9	4.5 %	14.0 %
New York	18	25 %	9.4 %
Paris	48	56 %	6.8 %
Munich	56	60 %	5.8 %
Singapore	94	47 %	4.7 %
Bangkok	139	54 %	13.4 %
Shanghai	196	93 %	5.5 %
Hong Kong	320	82 %	5.0 %



Increase awareness on the direct link of public transport with the environment

UITP jointly with UNEP will jointly roll out a first international TV awareness raising campaign

- 1 Launch to coincide with launch of Kyoto Protocol coming into force
- 2 100 x 30 second animations with the central theme

**The world is your home -
Take care of it!**

UITP

The world is your home - Take care of it!

UITP

The world is your home - Take care of it!

349 mio people in Europe will have the occasion to see it

Produced in English, Spanish, French & German

Shown on EuroNews, CNN, CNBC, Bloomberg, The Discovery Channel and National Geographic

.....
Our first steps.....

UITP

Lets make the links better



UITP



Better use of urban space



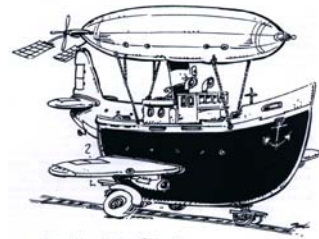
75 people are carried
either by 60 cars



or, only 1 bus.

UITP

Maybe before hydrogen



TRANSPORT OF THE FUTURE

UITP



Walter Br. Sabatini. Barcelona. The municipality has put a lane parallel to the
top of their agenda, to improve bicycle mobility.

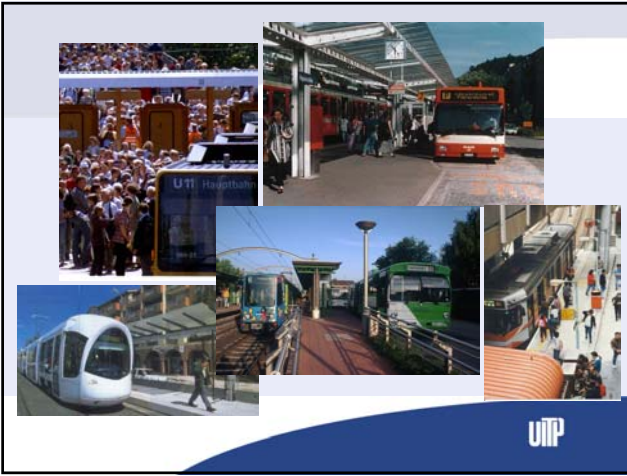


Congestion charging...

UITP



UITP



UTP



UTP



UTP



Integrates into the urban landscape

UTP

THANK YOU

heather.allen@uitp.com

Lets everybody lead a full and active life.

Reduces noise, accidents, pollution.

Gives mobility to all.

Makes our cities more productive and better places to live in.

Protects our future together.

